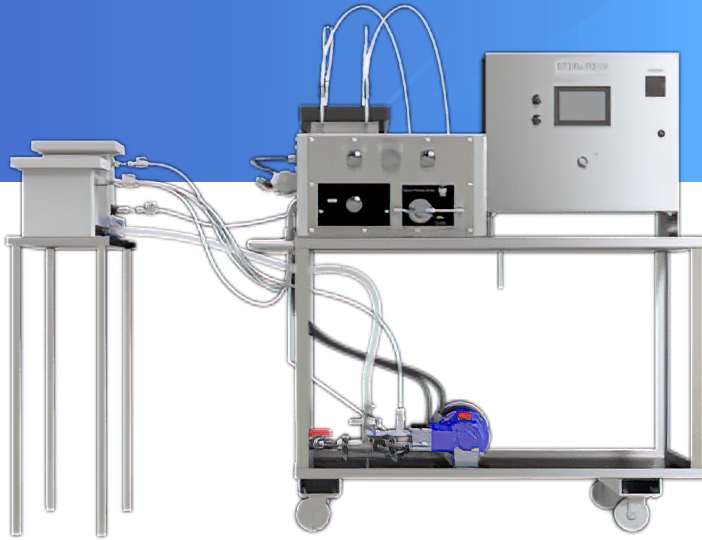


Digital Convertible Skid

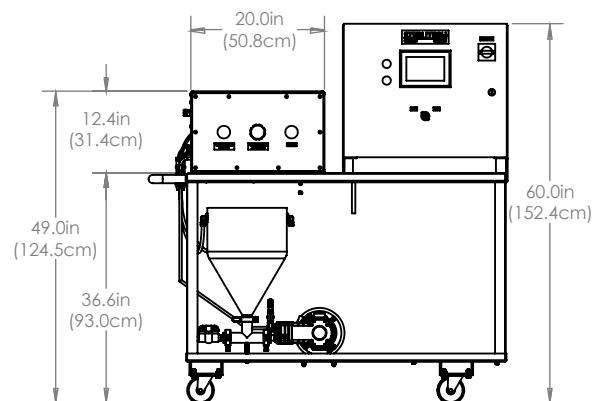
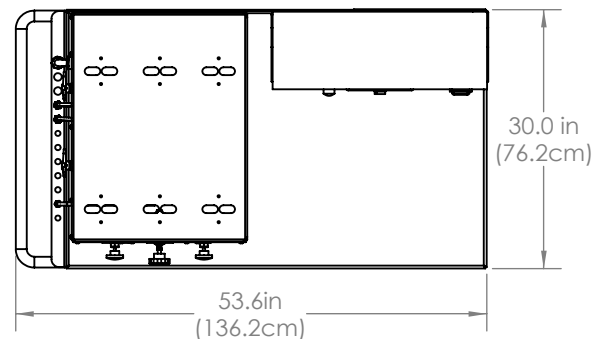
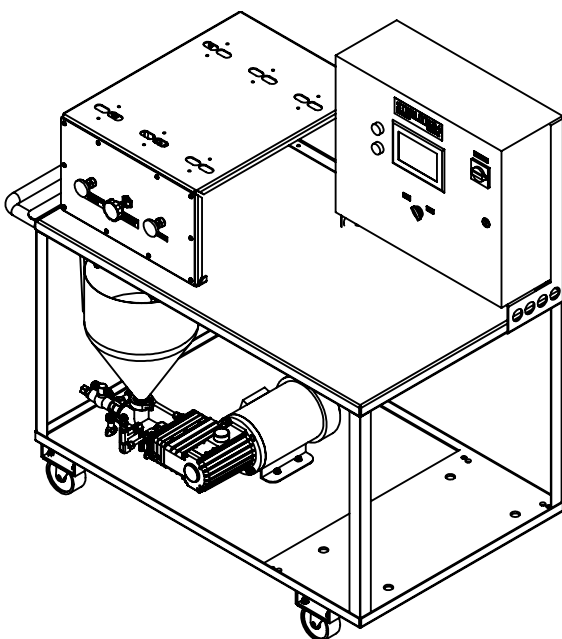


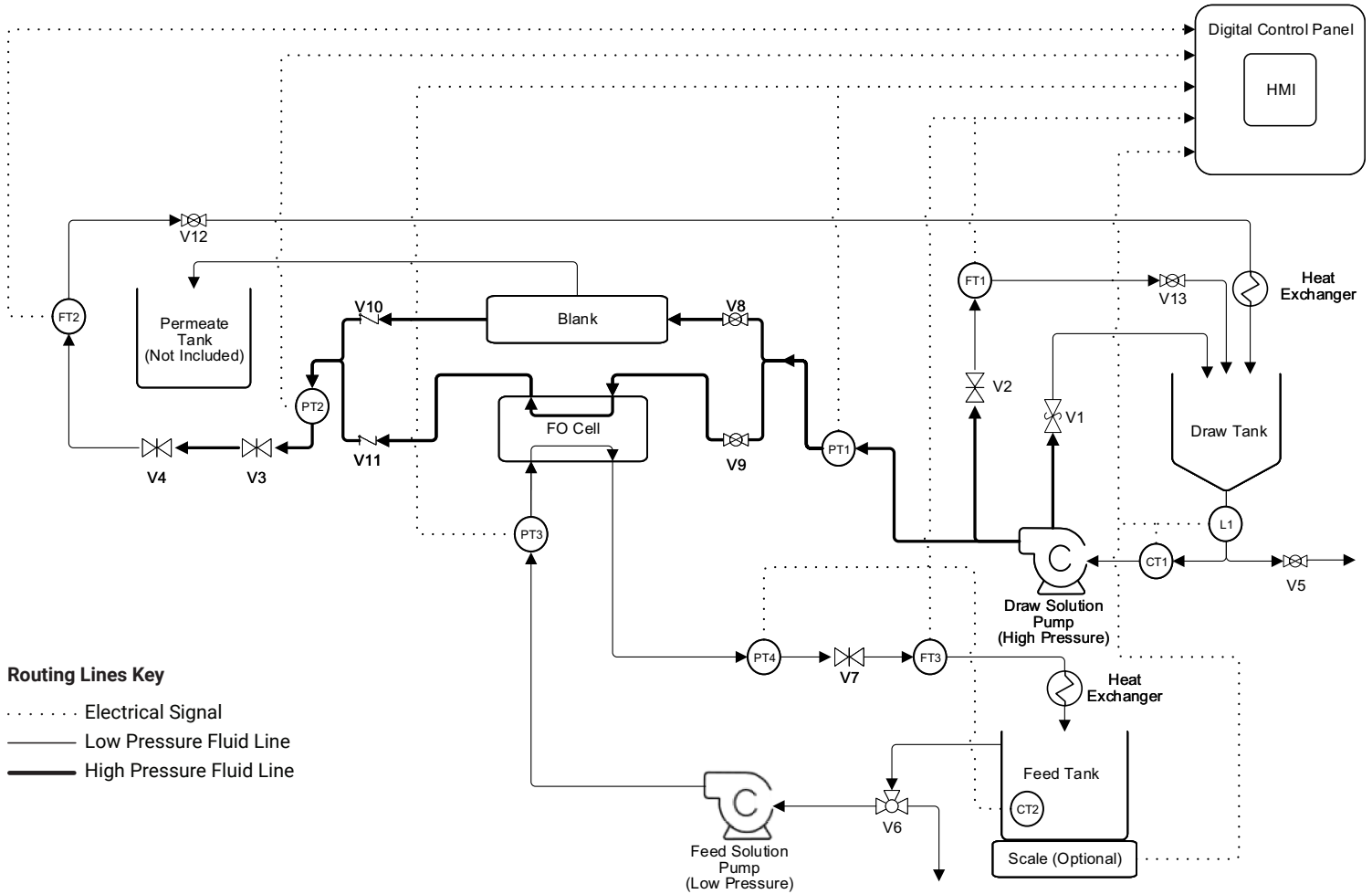
The Sterlitech™ Convertible Membrane Test Skid is a unique product designed to evaluate the performance of membranes widely used in pressure driven applications such as Reverse Osmosis, Nanofiltration, Ultrafiltration, Microfiltration, but also in osmotically driven applications such as Forward Osmosis, and Pressure Retarded Osmosis or temperature driven applications such as Membrane Distillation. This skid simulates the flow dynamics of larger, commercially available membrane filtration systems, offering experimental control by allowing adjustment of the flow parameters to accommodate a wide range of applications. This system can be configured for use with the Sepa CF, CF042, and CF016 cells. The Skid System also displays and records the data collected by the integrated sensors in real-time. Collected data can be accessed and retrieved using USB or Ethernet connections.

Specifications:

Cell Type	Sepa CF
Membrane Active Area	140 cm ²
Configuration	2 Parallel Lines (1 Crossflow, 1 Forward Osmosis)
Feed Flow Rate	3.2 LPM (0.85 GPM)
Max Pressure	69 bar (1,000PSI)
Data Monitoring ²	Pressure, Flow Rate, Temperature, Conductivity, Scale
Max Temperature	82 °C (180 °F)
Electrical Supply	110-230V, 50/60 Hz, 1 or 3 Phase
Pump and Motor Rating	Hydracell Diaphragm Pump, Leeson Washguard Motor, Low Pressure Gear Pump with Console Drive

Digital Convertible Skid Dimensions





Routing Lines Key

- Electrical Signal
- Low Pressure Fluid Line
- High Pressure Fluid Line

Digital CF Explorer Skid P&ID

Legend

V1	Draw Pressure Relief Valve	V12-13	Quick Disconnect Valves
V2	Draw Bypass Valve	PT1	Draw Pressure Transmitter
V3	Draw Low Pressure Control Valve	PT2	Draw Concentrate Pressure Transmitter
V4	Draw High Pressure Control Valve	PT3	Feed In Pressure Transmitter
V5	Draw Tank Drain Valve	PT4	Feed Out Pressure Transmitter
V6	Feed Tank Drain Valve	FT1	Bypass Flow Rate Transmitter
V7	Feed Pressure Control Valve	FT2	Draw Flow Rate Transmitter
V8	Bank Selector Valve #1	FT3	Feed Flow Rate Transmitter
V9	Bank Selector Valve #2	CT1	Draw Conductivity Transmitter
V10	Backflow Preventer Valve #1	CT2	Feed Conductivity Transmitter
V11	Backflow Preventer Valve #2	L1	Level Switch